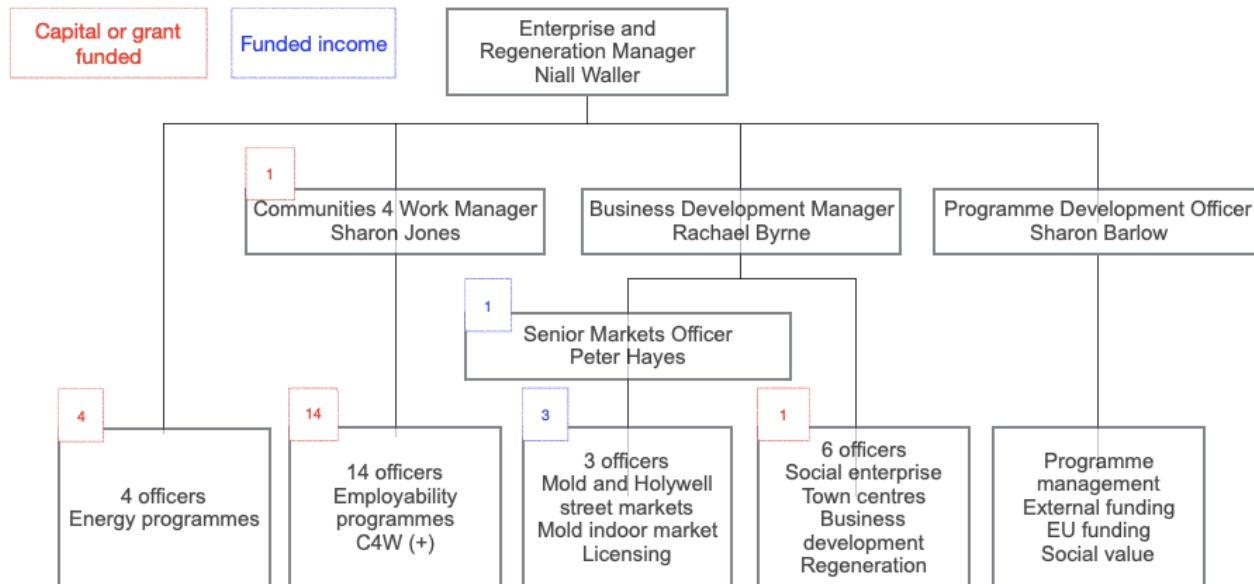


Enterprise and Regeneration

Service overview

19 December 2018

The service has recently restructured (November 2018) with a number of functions transferring to other services. The current service structure is shown below. The majority of the team are funded by external or capital funds or through earned income.



A service by service summary of current activity is provided below.

Energy programmes

The service provides support to vulnerable households in fuel poverty and co-ordinates and deploys the work of different programmes and funding streams to meet their needs. The service recently secured £2.8m from the Warm Homes Fund programme to provide advice, support and new heating systems to fuel poor households.

Communities 4 Work

Delivering two main programmes delivering one to one support to help people move into employment or press in the workplace:

- 1) Communities 4 Work
- 2) Communities 4 Work plus

There are also two other programmes delivered using WG Legacy funding:

- 1) Business Entrepreneurship Network - supporting new business starts
- 2) Social enterprise - part of the business development team

Markets

Managing the street markets in Mold and Holywell and the Mold indoor market. The Mold street market is one of the largest and most successful in North Wales. In addition to supporting the market businesses themselves this also improves trading conditions in the towns where they are located. The team also licence market activity in the County and manage the roundabouts sponsorship scheme. The service generates a net income for the Council.

Social enterprise

The Social Enterprise Development Officer (funded by WG Legacy funding but managed by the Business Development Manager) supports the development and growth of social businesses through one to one business advice. The role also includes promoting the importance of the sector, especially in service

delivery, and helping the sector to work effectively together. The role has been in place for three years and has seen the sector grow from a very small sector to a well developed and confident network of successful businesses.

Town centres

There is no current officer resource in place for town centre support or regeneration although a vacant position will be filled in the new year. The work of the service currently includes:

- Supporting town centre stakeholders to implement long term plans and projects where resources allow.
- County-level marketing of towns.
- Responding to development interest in town centres.

The service is currently developing a new strategic approach to supporting town centres.

Business development

The team provides:

1. Face to face support to businesses to better understand their needs and in some cases to help them to understand their own needs better (staff are qualified business advisors). Referral on to wider support programmes and finance packages.
2. Business engagement and business networking. A wide range of other organisations piggy-back upon our ability to do this so well.
3. Co-ordinating activity between DWP, Careers Wales, FE, HE and WG to share intelligence on what's happening locally and to plan effective joint responses to, for example, new businesses arriving, business expansions and redundancies.
4. Working closely with local site and premises owners and their agents to help broker contacts with new and expanding businesses.
5. Support to the regional digital work stream and the implementation of the Flintshire digital action plan.

Tourism

The Tourism Officer, supported by the wider business development team:

- Provides advice and support to individual businesses and supports tourism business networking activity
- Co-ordinates the Destination Management (DM) Partnership and the implementation of the DM action plan
- Promotes the County through regional marketing activity including social media
- Supports tourism initiatives developed by stakeholders

Programme development

Provides a programme management resource and expertise to enable other services to secure and effectively manage external funding and earned income and to establish suitable management controls and processes.

Currently providing support to develop the Council approach to delivering social value through procurement activity.

Regional economy

The service inputs into a number of regional economic development work streams:

- Co-lead for Economic Ambition Board employability pathway project.
- Digital connectivity including successful Local Full Fibre Network bid of £9m.
- Regeneration programmes.
- Collaborative working on energy, manufacturing and European funding.